

G05 - 1/8" PULSE METERS

The G05 is the smallest capacity meter in the G Series range and is differentiated by its low flow rate capabilities. It has the ability to handle a wide range of fluid viscosities with exceptional levels of repeatability and durability.



Product Benefits

- Very compact size.
- Low flow capability with high resolution output.
- Meter accuracy is verified by a factory calibration check after which an individual metrology report is issued.
- Solid state Hall Effect Sensor or Reed Switch options.
- Low pressure drop allows for economical pump selection or gravity flow applications.
- Meter design minimises the number of wearable and replaceable parts and extends product life.
- Will handle particle sizes to 0.127mm/0.005".
- Has IP54/NEMA13 protection.
- Flexibility of installation options (e.g. can be mounted horizontally or vertically; no flow conditioning required).

| | ALUMINIUM MODEL | STAINLESS STEEL MODEL |
|---|--|--|
| MODEL | G05ASP-XY | G05SSP-XY |
| METER TYPE | PULSE | PULSE |
| METER BODY MATERIAL | ALUMINIUM | 316 STAINLESS STEEL |
| WETTED COMPONENTS: ROTOR MATERIAL SHAFTS O-RING | 316 STAINLESS STEEL 316 STAINLESS STEEL VITON(others available) | 316 STAINLESS STEEL 316 STAINLESS STEEL VITON (others available) |
| FLOW RATE RANGES (litres per hour/US gallons per hour) ABOVE 5 CPS BELOW 5 CPS | 0.5 to 50 L/Hr / 0.132 to 13.2 USG/Hr 2 to 50 L/Hr / 0.528 to 13.2 USG/Hr | 0.5 to 50 L/Hr / 0.132 to 13.2 USG/Hr 2 to 50 L/Hr / 0.528 to 13.2 USG/Hr |
| ACCURACY- WITHIN (OF READING) | +/- 1% | +/- 1% |
| REPEATABILITY | 0.03% | 0.03% |
| MAXIMUM VISCOSITY | 1000 Centipoise | 1000 Centipoise |
| MAXIMUM OPERATING PRESSURE | 500kPa/ 75 PSI/ 5 BAR | 1000kPa/ 150PSI/ 10BAR |
| PULSER TYPE | HALL EFFECT SENSOR OR REED SWITCH | HALL EFFECT SENSOR OR REED SWITCH |
| PULSES PER LITRE/US GALLON | 1547 / 5855.4 | 1547 / 5855.4 |
| MODEL DIMENSIONS METER BODY PORT FACE TO FACE | 50x50mm / 1.97"x1.97" 65mm / 2.58" | 50x50mm / 1.97"x1.97" 65mm / 2.58" |
| WEIGHT | 308g / 10.86oz | 602g / 21.23oz |
| MAX. OPERATING TEMPERATURE | 80°C / 176°F | 120°C / 248°F |
| RECOMMENDED MESH STRAINER SIZE | 200 MESH | 200 MESH |

X-Port Size To order flowmeter you must replace 'X' with the relevant number. This number will determine the following specifications:
Y-Switch Operation (ie: Specify 'H' for Hall Effect or 'R' for Reed Switch)

1 = 1/8" BSP (F) ports
2 = 1/8" NPT (F) ports

Calibrated in litres
Calibrated in US gallons

1m/39" pulser fly lead
1m/39" pulser fly lead

G05 - 1/8" PULSE METERS

TYPE G05 - 1/8" PULSE METERS

Weights

| MODEL | G05ASP-XY | G05SSP-XY | |
|--------|----------------|----------------|--|
| WEIGHT | 308g / 10.86oz | 602g / 21.23oz | |

Options & Accessories

| G05 - 1/8" METER | VITON O-RING | TEFLON O-RING | EPDM O-RING | HIGH TEMP ROTORS | HIGH VISCOSITY ROTORS | HALL EFFECT SENSOR | REED SWITCH | SOLVENT KIT | PPS ROTORS WITH HASTALLOY C SHAFTS | PROTECTIVE BOOT | EXTENDED LIFE BATTERY | REMOTE MOUNTED LC DISPLAY | HEATING JACKET | 4-20mA MODULE (REMOTE) |
|------------------|--------------|---------------|-------------|------------------|-----------------------|--------------------|-------------|-------------|------------------------------------|-----------------|-----------------------|---------------------------|----------------|------------------------|
| G05ASP-XY | S | O | O | X | X | X | O | X | X | X | X | A | X | A |
| G05SSP-XY | S | O | O | X | X | O | O | X | X | X | X | A | X | A |

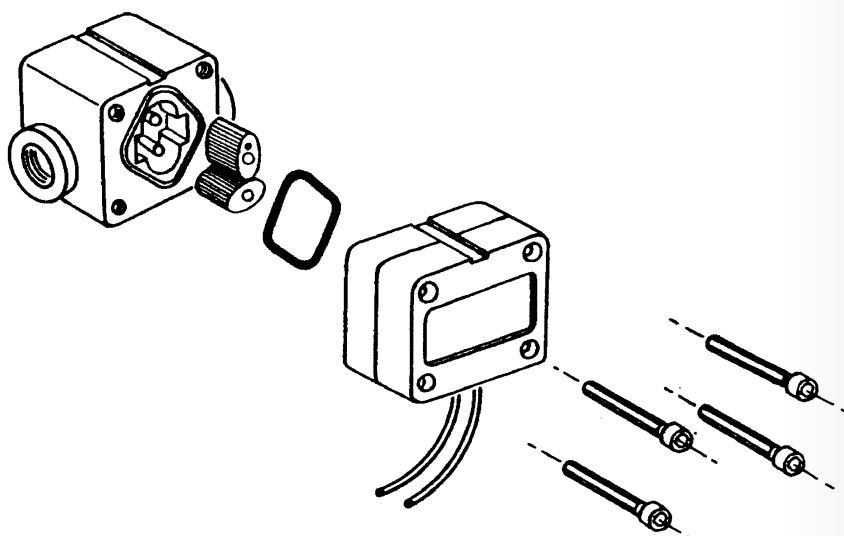
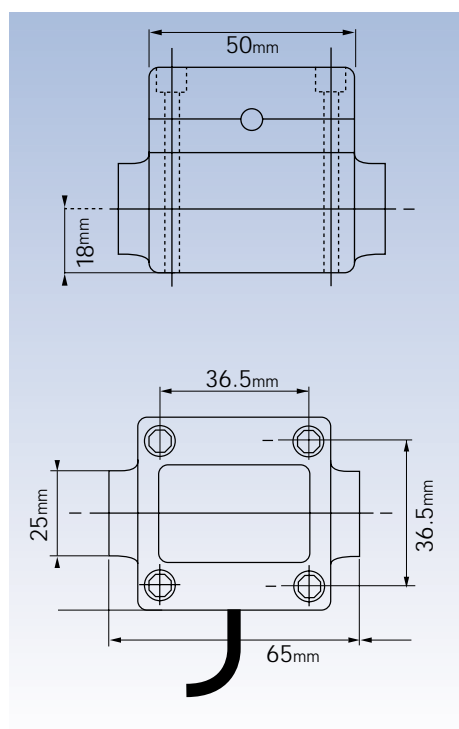
S = Standard

O = Optional

X = Not Available

A = Accessory

Dimensions of Standard meter model type G05XSP-X



G80 3" PD Flowmeter



Suitable for fuels, solvents and lubricants to a viscosity of 1000cps, the **G80** is a three inch (3") hybrid, high flow, oval gear flowmeter and, as the largest capacity meter in the G-Series range, is capable of measuring fluid transfer up to 733LPM. Remaining consistent with GEMINI'S entire range of PD flowmeters, the G80 is accurate to +/- 0.5%, providing exceptional levels of repeatability and durability. The **G80** is available with analogue mechanical display, pulse only or with either of two LCD units (refer below).

PRODUCT BENEFITS:

- Compact size
- Easy to read and operate mechanical display
- Flexibility of installation options (eg: can be mounted horizontally or vertically - no flow conditioning required)
- Low pressure drop allows for economical pump selection or gravity flow applications
- Meter construction enables fast and easy on-site servicing without removal from application
- Meter accuracy is verified by a factory calibration check after which an individual metrology report is issued
- Meter design minimises the number of wearable and replaceable parts and extends product life
- Will handle particle sizes to 0.5mm/0.0510"
- Available with 3" BSP(F), 3" NPT(F), ANSI 150lb, and JIS 10 flange rules (modular construction)
- An option of 100 pulse per unit of measurable output pulse available
- LCD optional displays meet European CE directive
- Standard/deluxe displays and pulse version have IP66/NEMA6 protection
- Intrinsically safe deluxe LC display. Certificate of conformity number PTB NR. Ex-93. C4033x, KemaEx-00.E.1127x
- Pulse version flameproof certified AUS Ex2377x



STANDARD DISPLAY

- Liquid Crystal Display
- 7 x 17mm Digits
- 11 x 8mm Digits
- Total / Reset Total / Rate
- 7 Year Battery Life
- Meter or Remote Mount
- IP65 Protection



DELUXE DISPLAY

- Liquid Crystal Display
- 7 x 13mm Digits
- Total / Reset Total / Rate
- Batching Facility
- 1 Year Battery Life
- Meter or Remote Mount
- IP54 Protection
- Silicon Protection Boot Option



MECHANICAL REGISTER ANALOGUE

- Revolving Pointer 10L or 100L
- 150mm Diameter Dial
- Total 6 Digits
- Reset Total 4 Digits
- Pulser Option



METER SPECIFICATIONS:

| | |
|--|-----------------------------|
| MODEL: | G80 |
| Meter body material: | AA601 Aluminium |
| Wetted components: | |
| Rotor material: | Aluminium |
| Shafts: | 316 stainless steel |
| O-ring: | NBR (nitrile) |
| Flow rate ranges: | |
| Above 5cps: | 20-733 LPM* / 5-194 GPM* |
| Below 5cps: | 66-616 LPM* / 17-163 GPM* |
| Accuracy: within (of reading) | +/-0.5% |
| Repeatability: | 0.03% |
| Pulser type | |
| (Pulse and LCD display only): | Dual Reed Switch |
| Pulse per litre/US gallon | |
| (Pulse and LCD display only): | 2.58 / 9.766 |
| Maximum viscosity (of standard model): | 1000 centipoise |
| Maximum operating pressure: | 1200 kPa / 175PSI / 12 BAR |
| Maximum operating temperature: | 80°C / 176°F, 120°C / 240°F |
| Recommended mesh strainer size: | 40 mesh |



OPTIONS & ACCESSORIES

| G80 - 3" METER | VITON O-RING | TEFLON O-RING | EPDM O-RING | HIGH TEMP ROTORS | HIGH VISCOSITY ROTORS | HALL EFFECT SENSOR | REED SWITCH | SOLVENT KIT | HASTALLOY C SHAFTS | PROTECTIVE BOOT DELUXE LCD | EXTENDED LIFE BATTERY DELUXE LCD | REMOTE MOUNTED LC DISPLAY | HEATING JACKET | 4-20mA MODULE |
|----------------|--------------|---------------|-------------|------------------|-----------------------|--------------------|-------------|-------------|--------------------|----------------------------|----------------------------------|---------------------------|----------------|---------------|
| G80AAX-X | 0 | 0 | 0 | X | X | 0 | S | X | X | A | A | A | X | A |
| G80AAMA-X | 0 | 0 | 0 | X | X | X | X | 0 | X | S | A | X | X | X |

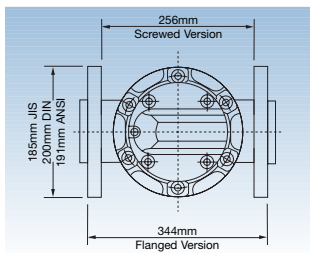
S = Standard

0 = Optional

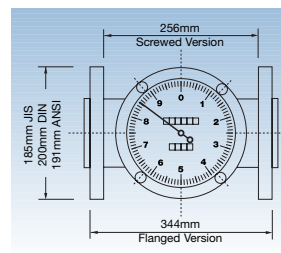
X = Not Available

A = Accessory

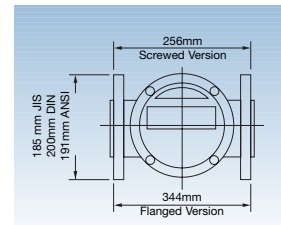
DIMENSIONS



Pulse Version



Analogue Mechanical Display



Standard/Deluxe Display

Available From:

G50 - 2" PULSE & LCD DISPLAY METERS

The G50 is the largest capacity meter in the G Series range. It has the ability to handle a wide range of fluid viscosities with exceptional levels of repeatability and durability.



G50ARP-3

Product Benefits

- Compact size.
- Two independent pulse units which can be linked to allow doubling of the pulse output.
- Flexibility of installation options (e.g. can be mounted horizontally or vertically; no flow conditioning required).
- Low pressure drop allows for economical pump selection or gravity flow applications.
- Meter construction enables fast and easy on-site servicing without removal from application.
- Meter design minimises the number of wearable and replaceable parts and extends product life.
- Meter accuracy is verified by a factory calibration check after which an individual metrology report is issued.
- Both LC Display meets European CE directive.
- Deluxe Display Pulse Version has IP66/NEMA6 protection.
- Intrinsically safe LC Deluxe Display. Certificate of conformity number PTB Nr. Ex-93.C.4033x
- Pulse Version has Flameproof Certification. AUS Ex2377x
- Will handle particle sizes to 0.28mm/0.011".

| MODEL | G50 |
|---|---|
| METER TYPE | PULSE / STANDARD LC DISPLAY / DELUXE LC DISPLAY |
| METER BODY MATERIAL | AA601 ALUMINIUM / 316 STAINLESS STEEL |
| WETTED COMPONENTS: | |
| ROTOR MATERIAL | PPS / 316 STAINLESS STEEL |
| SHAFTS | 316 STAINLESS STEEL |
| O-RING | NBR (NITRILE) |
| FLOW RATE RANGES (litres per minute/US gallons per minute) | |
| ABOVE 5 CPS | 15 to 350 / 3.96 to 92.46 |
| BELOW 5 CPS | 30 to 300 / 7.93 to 79.25 |
| ACCURACY- WITHIN (OF READING) | +/- 0.5% |
| REPEATABILITY | 0.03% |
| MAXIMUM VISCOSITY (OF STANDARD MODEL) | 1000 Centipoise |
| MAXIMUM OPERATING PRESSURE | AS PER FLANGE RULE |
| PULSER TYPE | HALL EFFECT OR REED SWITCH OR COMBINATION HE / RS |
| PULSES PER LITRE/US GALLONS | 6.68 / 25.29 |
| MAX. OPERATING TEMPERATURE | 80°C / 176°F, 120°C / 240°F |
| RECOMMENDED MESH STRAINER SIZE | 60 MESH |

Flameproof Approval



Standard LC Display I.S Version available



Deluxe LC Display I.S Version standard

Port Size To order flowmeter you must replace 'X' with the relevant number. This number will determine the following specifications:

Port Size:

- 3 = 2" ANSI 150lb Flange
- 4 = 2" ANSI 150lb Flange
- 5 = 50mm DIN 16 Flange

Calibrated and Display In:

- Litres
- US Gallons
- Litres

Electrical Conduit Connection:

- 20mm (F)
- 1/2" NPT (F)
- 20mm (F)

PPS = Polyphenylene Sulfide Resins

G50 - 2" PULSE & LCD DISPLAY METERS

Options & Accessories

| G50 - 2" METER | VITON O-RING | TEFLON O-RING | EPDM O-RING | HIGH TEMP ROTORS | HIGH VISCOSITY ROTORS | HALL EFFECT SENSOR | REED SWITCH | SOLVENT KIT | HASTALLOY C SHAFTS | PROTECTIVE BOOT DELUXE LCD | EXTENDED LIFE BATTERY DELUXE LCD | REMOTE MOUNTED LC DISPLAY | HEATING JACKET | 4-20mA MODULE |
|----------------|--------------|---------------|-------------|------------------|-----------------------|--------------------|-------------|-------------|--------------------|----------------------------|----------------------------------|---------------------------|----------------|---------------|
| G50ARX-X | O | O | O | O | O | O | S | X | X | A | A | A | A | A |
| G50SRX-X | O | O | O | O | O | O | S | X | X | A | A | A | A | A |
| G5055X-X | O | O | O | S | O | O | S | X | X | A | A | A | A | A |
| G50ASX-X | O | O | O | S | O | O | S | X | X | A | A | A | A | A |

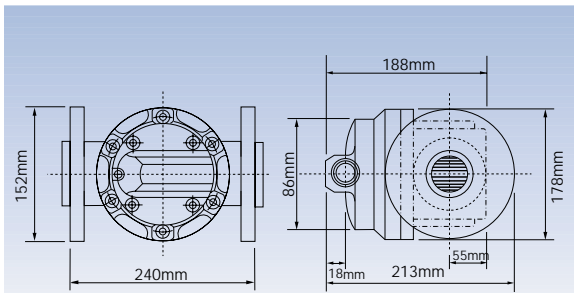
S = Standard

O = Optional

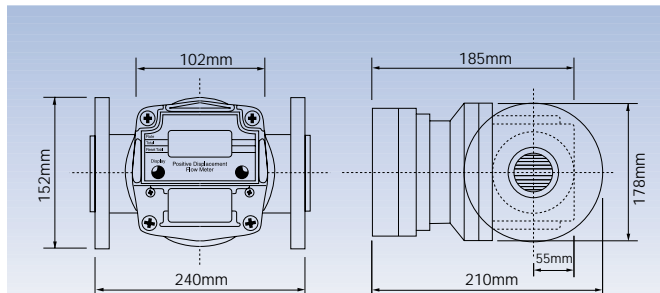
X = Not Available

A = Accessory

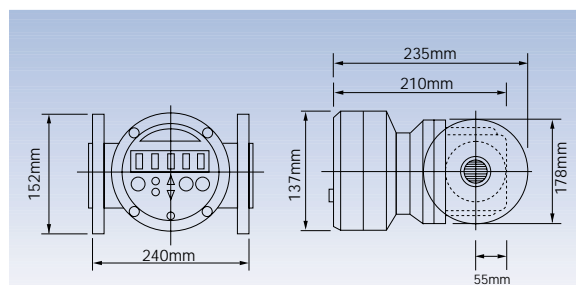
Dimensions



Pulse



Standard Display



Deluxe Display

TYPE G50 - 2" PULSE & LCD DISPLAY METERS

G50 - 2" METERS WITH MECHANICAL DISPLAY

The G50 is the medium to large capacity meter in the G Series range. It has the ability to handle a wide range of fluid viscosities with exceptional levels of repeatability and durability.



G50ARM-3

Product Benefits

- Compact size.
- Easy to read and operate mechanical display.
- Flexibility of installation options (e.g. can be mounted horizontally or vertically; no flow conditioning required).
- Low pressure drop allows for economical pump selection or gravity flow applications.
- Meter construction enables fast and easy on-site servicing without removal from application.
- Meter accuracy is verified by a factory calibration check after which an individual metrology report is issued.
- Meter design minimises the number of wearable and replaceable parts and extends product life.
- Will handle particle sizes to 0.38mm/0.015".
- An Option of 100 Pulse per unit of measure output Pulse is available for the Analogue version.

| MODEL | G50 |
|---|---|
| METER TYPE | METER WITH MECHANICAL DISPLAY |
| METER BODY MATERIAL | AA601 ALUMINIUM / 316 STAINLESS STEEL |
| WETTED COMPONENTS: ROTOR MATERIAL SHAFTS O'RING | PPS / 316 STAINLESS STEEL 316 STAINLESS STEEL NBR (NITRILE) |
| FLOW RATE RANGES (litres per minute/US gallons per minute) ABOVE 5 CPS BELOW 5 CPS | 15 to 350 / 3.96 to 92.46 30 to 300 / 7.93 to 79.25 |
| ACCURACY- WITHIN (OF READING) REPEATABILITY | +/- 1% ANALOGUE REGISTER +/- 0.5% 0.03% |
| MAXIMUM VISCOSITY (OF STANDARD MODEL) | 1000 Centipoise |
| MAXIMUM OPERATING PRESSURE | AS PER FLANGE RULE |
| MAX. OPERATING TEMPERATURE | 80°C / 176°F, 120°C / 240°F |
| RECOMMENDED MESH STRAINER SIZE | 60 MESH |



Mechanical Display



Analogue Mechanical Register

Port Size To order flowmeter you must replace 'X' with the relevant number. This number will determine the following specifications:

Port Size:

- 3 = 2" ANSI 150lb Flange
- 4 = 2" ANSI 150lb Flange
- 5 = 50mm DIN 16 Flange

Calibrated and Display In:

- Litres
- US Gallons
- Litres

PPS = Polyphenylene Sulfide Resins

G50 - 2" METERS WITH MECHANICAL DISPLAY

Options & Accessories

| G50 - 2" MECHANICAL DISPLAY | VITON O-RING | TEFLON O-RING | EPDM O-RING | HIGH TEMP ROTORS | HIGH VISCOSITY ROTORS | HALL EFFECT SENSOR | REED SWITCH | SOLVENT KIT | HASTALLOY C SHAFTS | ANALOGUE REGISTER | PULSER KIT P500 | REMOTE MOUNTED LC DISPLAY | HEATING JACKET | 4-20mA MODULE |
|-----------------------------|--------------|---------------|-------------|------------------|-----------------------|--------------------|-------------|-------------|--------------------|-------------------|-----------------|---------------------------|----------------|---------------|
| G50ARM-X | O | O | O | O | O | X | X | O | X | O | A | X | A | X |
| G50SRM-X | O | O | O | O | O | X | X | O | X | O | A | X | A | X |
| G50SSM-X | O | O | O | S | O | X | X | S | X | O | A | X | A | X |
| G50ASM-X | O | O | O | S | O | X | X | S | X | O | A | X | A | X |

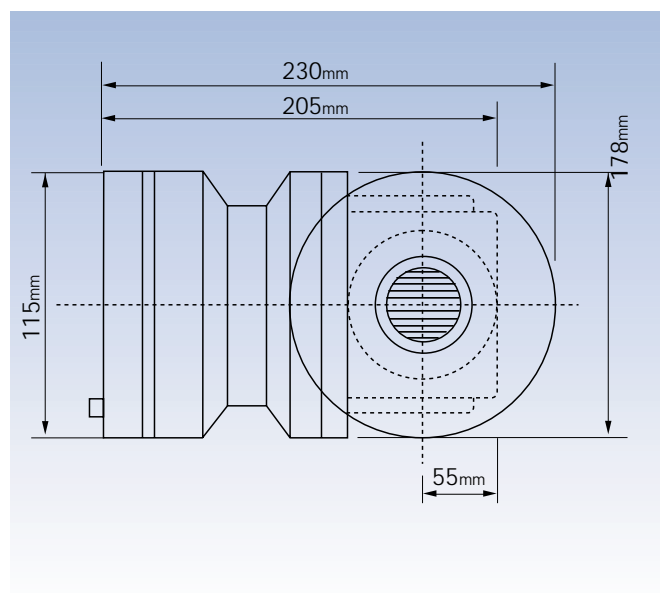
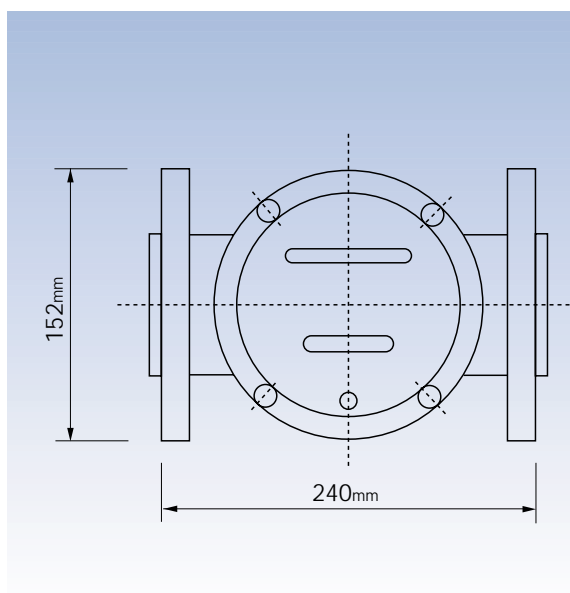
S = Standard

O = Optional

X = Not Available

A = Accessory

Dimensions



G40 - 1 1/2" PULSE & LCD DISPLAY METRES

The G40 is the medium to large capacity meter in the G Series range. It has the ability to handle a wide range of fluid viscosities with exceptional levels of repeatability and durability.



G40ARP-1

Product Benefits

- Compact size.
- Two independent pulse units which can be linked to allow doubling of the pulse output.
- Flexibility of installation options (e.g. can be mounted horizontally or vertically; no flow conditioning required).
- Low pressure drop allows for economical pump selection or gravity flow applications.
- Meter construction enables fast and easy on-site servicing without removal from application.
- Meter design minimises the number of wearable and replaceable parts and extends product life.
- Meter accuracy is verified by a factory calibration check after which an individual metrology report is issued.
- Both LC Display meets European CE directive.
- Deluxe Display Pulse Version has IP66/NEMA6 protection.
- Intrinsically safe LC Deluxe Display. Certificate of conformity number PTB Nr. Ex-93.C.4033x
- Pulse Version has Flameproof Certification. AUS Ex2377x
- Will handle particle sizes to 0.28mm/0.011".

| MODEL | G40 |
|---|--|
| METER TYPE | PULSE / STANDARD LC DISPLAY / DELUXE LC DISPLAY |
| METER BODY MATERIAL | AA601 ALUMINIUM / 316 STAINLESS STEEL / BRONZE |
| WETTED COMPONENTS: | |
| ROTOR MATERIAL | PPS / 316 STAINLESS STEEL |
| SHAFTS | 316 STAINLESS STEEL |
| O-RING | NBR (NITRILE) |
| FLOW RATE RANGES (litres per minute/US gallons per minute) | |
| ABOVE 5 CPS | 10 to 250 / 2.6 to 66 |
| BELOW 5 CPS | 15 to 235 / 4 to 62 |
| ACCURACY- WITHIN (OF READING) | +/- 0.5% |
| REPEATABILITY | 0.03% |
| MAXIMUM VISCOSITY (OF STANDARD MODEL) | 1000 Centipoise |
| MAXIMUM OPERATING PRESSURE | 5500kPa/ 800 PSI/ 55 BAR OR FLANGE RULE WHERE FITTED |
| PULSER TYPE | HALL EFFECT OR REED SWITCH OR COMBINATION HE /RS |
| PULSES PER LITRE/US GALLON | 14.5 OR 29 / 54.9 OR 109.8 |
| MAX. OPERATING TEMPERATURE | 80°C / 176°F, 120°C / 248°F |
| RECOMMENDED MESH STRAINER SIZE | 60 MESH |



Standard LC Display



Deluxe LC Display

Port Size To order flowmeter you must replace 'X' with the relevant number. This number will determine the following specifications:

Port Size:

- 1 = 1 1/2" BSP (F) ports
- 2 = 1 1/2" NPT (F) ports
- 3 = 1 1/2" ANSI 150lb Flange
- 4 = 1 1/2" ANSI 150lb Flange
- 5 = 40mm DIN 16 Flange

Calibrated and Display In:

- Litres
- US Gallons
- Litres
- US Gallons
- Litres

Electrical Conduit Connection:

- 20mm (F)
- 1/2" NPT (F)
- 20mm (F)
- 1/2" NPT (F)
- 20mm (F)

PPS = Polyphenylene Sulfide Resins

G40 - 1 1/2" PULSE & LCD DISPLAY METRES

Options & Accessories

| G40 - 1 1/2" METER | VITON O-RING | TEFLON O-RING | EPDM O-RING | HIGH TEMP ROTORS | HIGH VISCOSITY ROTORS | HALL EFFECT SENSOR | REED SWITCH | SOLVENT KIT | HASTALLOY C SHAFTS | PROTECTIVE BOOT DELUXE LCD | EXTENDED LIFE BATTERY DELUXE LCD | REMOTE MOUNTED LC DISPLAY | HEATING JACKET | 4-20mA MODULE |
|--------------------|--------------|---------------|-------------|------------------|-----------------------|--------------------|-------------|-------------|--------------------|----------------------------|----------------------------------|---------------------------|----------------|---------------|
| G40ARX-X | O | O | O | O | O | O | S | X | X | A | A | A | A | A |
| G40ASX-X | O | O | O | S | O | O | S | X | X | A | A | A | A | A |
| G40BRX-X | O | O | O | O | O | O | S | X | X | A | A | A | A | A |
| G40SRX-X | O | O | O | O | O | O | S | X | X | A | A | A | A | A |
| G40SSX-X | O | O | O | S | O | O | S | X | X | A | A | A | A | A |

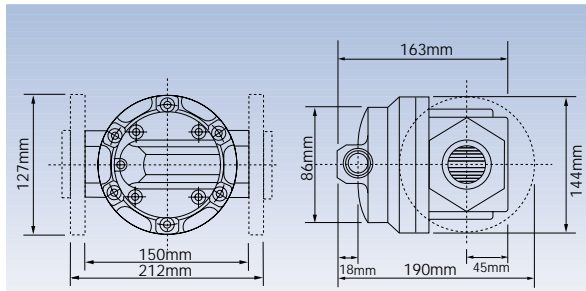
S = Standard

O = Optional

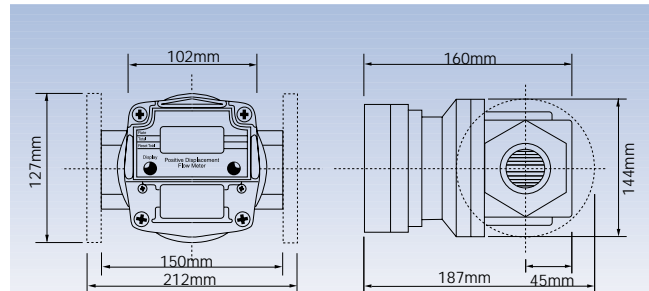
X = Not Available

A = Accessory

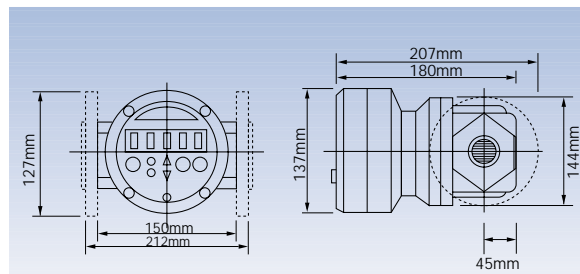
Dimensions



Pulse



Standard Display



Deluxe Display

TYPE G40 - 1 1/2" PULSE & LCD DISPLAY METERS

G40 - 1 1/2" METERS WITH MECHANICAL DISPLAY

The G40 is the medium to large capacity meter in the G Series range. It has the ability to handle a wide range of fluid viscosities with exceptional levels of repeatability and durability.



G40SRM-3

Product Benefits

- Compact size.
- Easy to read and operate mechanical display.
- Flexibility of installation options (e.g. can be mounted horizontally or vertically; no flow conditioning required).
- Low pressure drop allows for economical pump selection or gravity flow applications.
- Meter construction enables fast and easy on-site servicing without removal from application.
- Meter accuracy is verified by a factory calibration check after which an individual metrology report is issued.
- Meter design minimises the number of wearable and replaceable parts and extends product life.
- Will handle particle sizes to 0.38mm/0.015".
- An Option of 100 Pulse per unit of measure output Pulse is available for the Analogue version.

| MODEL | G40 |
|---|---|
| METER TYPE | METER WITH MECHANICAL DISPLAY |
| METER BODY MATERIAL | AA601 ALUMINIUM / 316 STAINLESS STEEL |
| WETTED COMPONENTS: | |
| ROTOR MATERIAL | PPS / 316 STAINLESS STEEL |
| SHAFTS | 316 STAINLESS STEEL |
| O-RING | NBR (NITRILE) |
| FLOW RATE RANGES (litres per minute/US gallons per minute) | |
| ABOVE 5 CPS | 10 to 250 / 2.6 to 66 |
| BELOW 5 CPS | 15 to 235 / 4 to 62 |
| ACCURACY- WITHIN (OF READING) | +/- 1% / ANALOGUE REGISTER +/- 0.5% |
| REPEATABILITY | 0.03% |
| MAXIMUM VISCOSITY (OF STANDARD MODEL) | 1000 Centipoise |
| MAXIMUM OPERATING PRESSURE | 3450kPa/ 500 PSI/ 34.5 BAR OR FLANGE RULE WHERE FITTED |
| MAX. OPERATING TEMPERATURE | 80°C / 176°F, 120°C / 248°F |
| RECOMMENDED MESH STRAINER SIZE | 60 MESH |



Mechanical Display



Analogue Mechanical Register + Pulse Output

Port Size To order flowmeter you must replace 'X' with the relevant number. This number will determine the following specifications:

Port Size:

- 1 = 1 1/2" BSP (F) ports
- 2 = 1 1/2" NPT (F) ports
- 3 = 1 1/2" ANSI 150lb Flange
- 4 = 1 1/2" ANSI 150lb Flange
- 5 = 40mm DIN 16 Flange

Calibrated and Display In:

- Litres
- US Gallons
- Litres
- US Gallons
- Litres

PPS = Polyphenylene Sulfide Resins

G40 - 1 1/2" METERS WITH MECHANICAL DISPLAY

Options & Accessories

| G40 - 1 1/2" MECHANICAL DISPLAY | VITON O-RING | TEFLON O-RING | EPDM O-RING | HIGH TEMP ROTORS | HIGH VISCOSITY ROTORS | HALL EFFECT SENSOR | REED SWITCH | SOLVENT KIT | HASTALLOY C SHAFTS | ANALOGUE REGISTER | PULSER KIT P500 | REMOTE MOUNTED LC DISPLAY | HEATING JACKET | 4-20mA MODULE |
|---------------------------------|--------------|---------------|-------------|------------------|-----------------------|--------------------|-------------|-------------|--------------------|-------------------|-----------------|---------------------------|----------------|---------------|
| G40ARM-X | O | O | O | O | O | X | X | O | X | O | A | X | A | X |
| G40ASM-X | O | O | O | S | O | X | X | S | X | O | A | X | A | X |
| G40SRM-X | O | O | O | O | O | X | X | S | X | O | A | X | A | X |
| G40SSM-X | O | O | O | S | O | X | X | S | X | O | A | X | A | X |

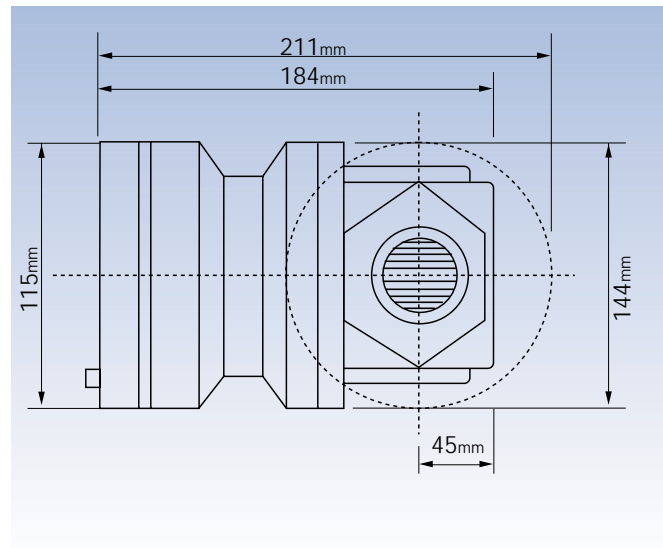
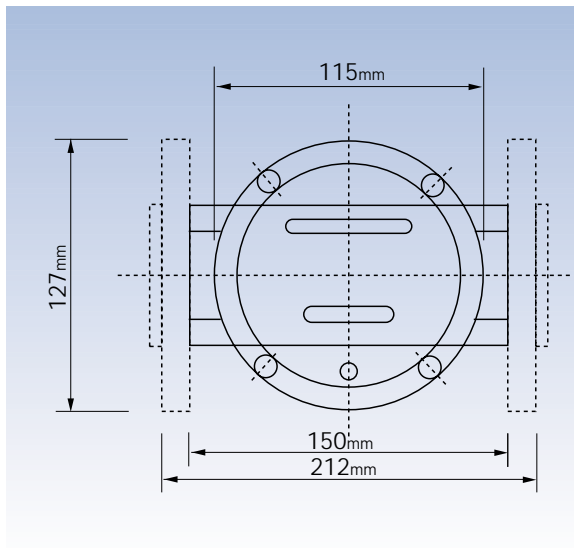
S = Standard

O = Optional

X = Not Available

A = Accessory

Dimensions



G10 - 1" PULSE & LCD DISPLAY METERS

The G10 is the medium capacity meter in the G Series range. It has the ability to handle a wide range of fluid viscosities with exceptional levels of repeatability and durability.



G10ARP-1

Product Benefits

- Compact size.
- Two independent pulse units which can be linked to allow doubling of the pulse output.
- Flexibility of installation options (e.g. can be mounted horizontally or vertically; no flow conditioning required).
- Low pressure drop allows for economical pump selection or gravity flow applications.
- Meter construction enables fast and easy on-site servicing without removal from application.
- Meter design minimises the number of wearable and replaceable parts and extends product life.
- Meter accuracy is verified by a factory calibration check after which an individual metrology report is issued.
- Both LC Display meets European CE directive.
- Deluxe Display Pulse Version has IP66/NEMA6 protection.
- Intrinsically safe LC Deluxe Display. Certificate of conformity number PTB Nr. Ex-93.C.4033x
- Pulse version as Flameproof Certification AUS Ex2377x
- Will handle particle sizes to 0.28mm/0.011".

| MODEL | G10 |
|---|---|
| METER TYPE | PULSE / STANDARD LC DISPLAY / DELUXE LC DISPLAY |
| METER TYPE | PULSE / LCD |
| METER BODY MATERIAL | AA601 ALUMINIUM / 316 STAINLESS STEEL / BRONZE |
| WETTED COMPONENTS: | |
| ROTOR MATERIAL | PPS / 316 STAINLESS STEEL |
| SHAFTS | 316 STAINLESS STEEL |
| O-RING | NBR (NITRILE) |
| FLOW RATE RANGES (litres per minute/ US gallons per minute) | |
| ABOVE 5 CPS | 6 to 120 / 1.6 to 32 |
| BELOW 5 CPS | 10 to 100 / 2.6 to 26 |
| ACCURACY- WITHIN (OF READING) | +/- 0.5% |
| REPEATABILITY | 0.03% |
| MAXIMUM VISCOSITY (OF STANDARD MODEL) | 1000 Centipoise |
| MAXIMUM OPERATING PRESSURE | 5500kPa/ 800 PSI/ 55 BAR OR FLANGE RULE WHERE FITTED |
| PULSER TYPE | HALL EFFECT OR REED SWITCH OR COMBINATION HE / RS |
| PULSES PER LITRE/ US GALLON | 36 OR 72 /136.3 OR 272.6 |
| MAX. OPERATING TEMPERATURE | 80°C / 176°F / 120°C / 248°F |
| RECOMMENDED MESH STRAINER SIZE | 60 MESH |

Flameproof Approval



Standard LC Display



Deluxe LC Display

Port Size To order flowmeter you must replace 'X' with the relevant number. This number will determine the following specifications:

Port Size:

- 1 = 1" BSP (F) ports
- 2 = 1" NPT (F) ports
- 3 = 1" ANSI 150lb Flange
- 4 = 1" ANSI 150lb Flange
- 5 = 25mm DIN 16 Flange
- 6 = 1" Triclover Flange
- 7 = 1" Triclover Flange

Calibrated and Display In:

- Litres
- US Gallons
- Litres
- US Gallons
- Litres
- Litres
- US Gallons

Electrical Conduit Connection:

- 20mm (F)
- 1/2" NPT (F)
- 20mm (F)
- 1/2" NPT (F)
- 20mm (F)
- 20mm (F)
- 1/2" NPT (F)

PPS = Polyphenylene Sulfide Resins

Bronze = Available in 1 or 2 port configuration only

G10 - 1" PULSE METERS & LCD DISPLAY METERS

Options & Accessories

| G10 - 1" METER | VITON O-RING | TEFLON O-RING | EPDM O-RING | HIGH TEMP ROTORS | HIGH VISCOSITY ROTORS | HALL EFFECT SENSOR | REED SWITCH | SOLVENT KIT | HASTALLOY C SHAFTS | PROTECTIVE BOOT DELUXE LCD | EXTENDED LIFE BATTERY DELUXE LCD | REMOTE MOUNTED LC DISPLAY | HEATING JACKET | 4-20mA MODULE |
|----------------|--------------|---------------|-------------|------------------|-----------------------|--------------------|-------------|-------------|--------------------|----------------------------|----------------------------------|---------------------------|----------------|---------------|
| G10ARX-X | O | O | O | O | O | O | S | X | X | A | A | A | A | A |
| G10ASX-X | O | O | O | S | O | O | S | X | X | A | A | A | A | A |
| G10SRX-X | O | O | O | O | O | O | S | X | X | A | A | A | A | A |
| G10SSX-X | O | O | O | S | O | O | S | X | X | A | A | A | A | A |
| G10BRX-X | O | O | O | O | O | O | S | X | X | A | A | A | A | A |

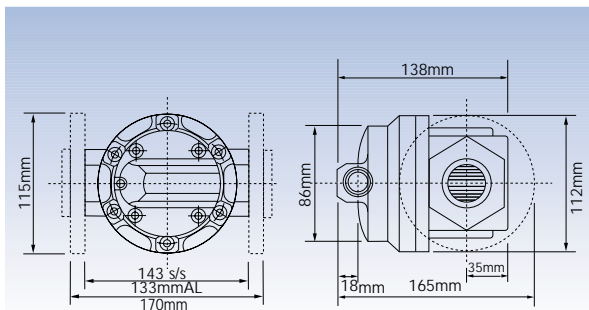
S = Standard

O = Optional

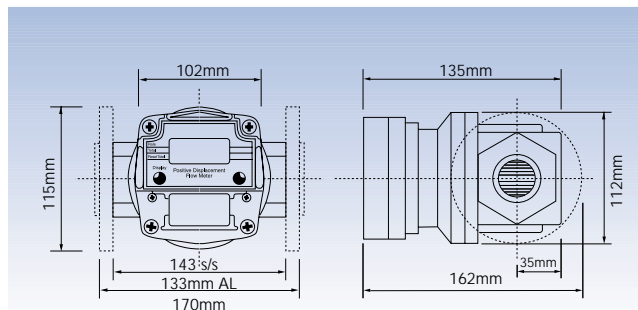
X = Not Available

A = Accessory

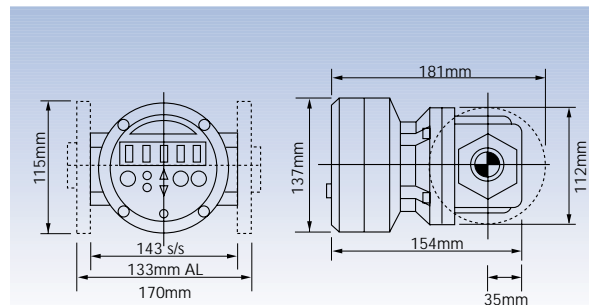
Dimensions



Pulse



Standard Display



Deluxe Display

TYPE G10 - 1" PULSE & LCD DISPLAY METERS

G10 - 1" METERS WITH MECHANICAL DISPLAY

The G10 is the medium capacity meter in the G Series range. It has the ability to handle a wide range of fluid viscosities with exceptional levels of repeatability and durability.



G10ARM-3

Product Benefits

- Compact size.
- Easy to read and operate mechanical display.
- Flexibility of installation options (e.g. can be mounted horizontally or vertically; no flow conditioning required).
- Low pressure drop allows for economical pump selection or gravity flow applications.
- Meter construction enables fast and easy on-site servicing without removal from application.
- Will handle particle sizes to 0.28mm/0.011".
- Meter accuracy is verified by a factory calibration check after which an individual metrology report is issued.
- Meter design minimises the number of wearable and replaceable parts and extends product life.
- An Option of 100 Pulse per unit of measure output Pulse is available for the Analogue version.

| | |
|---|--|
| MODEL | G10 |
| METER TYPE | METER WITH MECHANICAL DISPLAY |
| METER BODY MATERIAL | AA601 ALUMINIUM / 316 STAINLESS STEEL / BRONZE |
| WETTED COMPONENTS: | |
| ROTOR MATERIAL | PPS / 316 STAINLESS STEEL |
| SHAFTS | 316 STAINLESS STEEL |
| O-RING | NBR (NITRILE) |
| FLOW RATE RANGES (litres per minute/US gallons per minute) | |
| ABOVE 5 CPS | 6 to 120 / 1.6 to 32 |
| BELOW 5 CPS | 10 to 100 / 2.6 to 26 |
| ACCURACY- WITHIN (OF READING) | +/- 1% / ANALOGUE REGISTER +/- .05% |
| REPEATABILITY | 0.03% |
| MAXIMUM VISCOSITY (OF STANDARD MODEL) | 1000 Centipoise |
| MAXIMUM OPERATING PRESSURE | 3450kPa/ 500 PSI/ 34.5 BAR OR FLANGE RULE WHERE FITTED |
| MAX. OPERATING TEMPERATURE | 80°C / 176°F, 120°C / 248°F |
| RECOMMENDED MESH STRAINER SIZE | 60 MESH |



Mechanical Display



Analogue Mechanical Register

Port Size To order flowmeter you must replace 'X' with the relevant number. This number will determine the following specifications:

Port Size:

- 1 = 1" BSP (F) ports
- 2 = 1" NPT (F) ports
- 3 = 1" ANSI 150lb Flange
- 4 = 1" ANSI 150lb Flange
- 5 = 25mm DIN 16 Flange

Calibrated and Display In:

- Litres
- US Gallons
- Litres
- US Gallons
- Litres

PPS = Polyphenylene Sulfide Resins

G10 - 1" METERS WITH MECHANICAL DISPLAY

Options & Accessories

| G10 - 1" METER MECHANICAL DISPLAY | VITON O-RING | TEFLON O-RING | EPDM O-RING | HIGH TEMP ROTORS | HIGH VISCOSITY ROTORS | HALL EFFECT SENSOR | REED SWITCH | SOLVENT KIT | HASTALLOY C SHAFTS | ANALOGUE REGISTER | PULSE KIT P500 | REMOTE MOUNTED LC DISPLAY | HEATING JACKET | 4-20mA MODULE |
|---|--------------|---------------|-------------|------------------|-----------------------|--------------------|-------------|-------------|--------------------|-------------------|----------------|---------------------------|----------------|---------------|
| G10ARM-X | O | O | O | O | O | X | X | O | X | O | A | X | A | X |
| G10ASM-X | O | O | O | S | O | X | X | S | X | O | A | X | A | X |
| G10SRM-X | O | O | O | O | O | X | X | S | X | O | A | X | A | X |
| G10SSM-X | O | O | O | S | O | X | X | S | X | O | A | X | A | X |
| G10BRM-X | O | O | O | O | O | X | X | O | X | O | A | X | A | X |

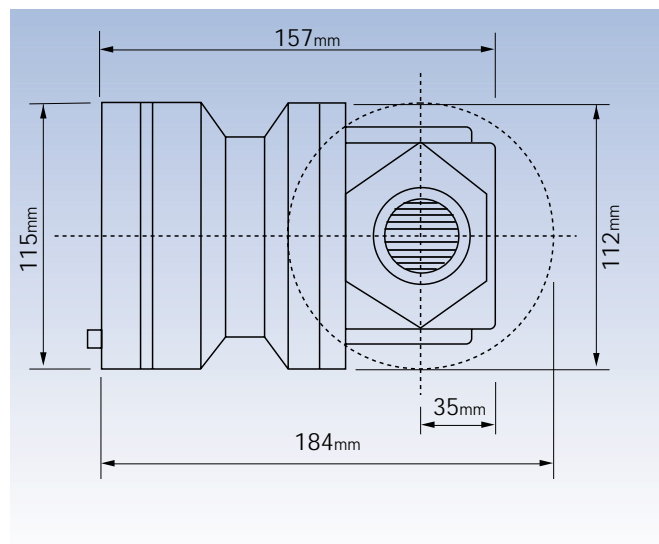
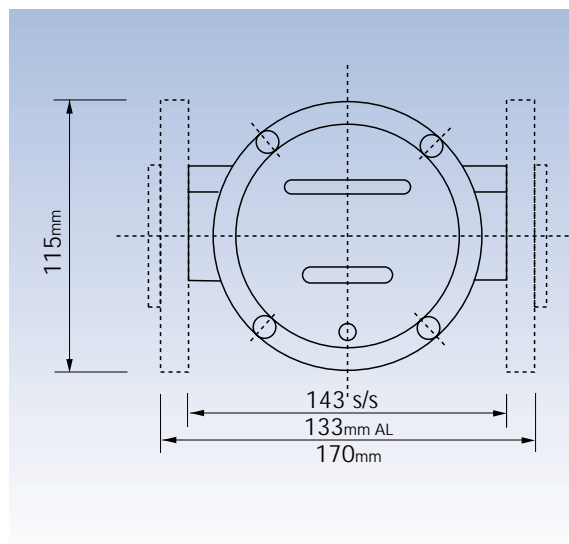
S = Standard

O = Optional

X = Not Available

A = Accessory

Dimensions



G7 - 1" PULSE & LC DISPLAY METERS

The G7 is a specialised meter for aggressive chemicals and water based products. It has the ability to handle a wide range of fluid viscosities with exceptional levels of repeatability and durability.



G7RRP-X

Product Benefits

- Compact size.
- Two independent pulse units which can be linked to allow doubling of the pulse output (or in-built spare if used as single).
- Will handle particle sizes to 0.28mm/0.011".
- Flexibility of installation options (e.g. can be mounted horizontally or vertically; no flow conditioning required).
- Low pressure drop allows for economical pump selection or gravity flow applications.
- Meter construction enables fast and easy on-site servicing without removal from application.
- Meter design minimises the number of wearable and replaceable parts and extends product life.
- Meter accuracy is verified by factory calibration check after which an individual metrology report is issued.
- Pulse Version has IP66/NEMA6 protection.

| MODEL | G7 |
|---|---|
| METER TYPE | PULSE / STANDARD LC DISPLAY / DELUXE LC DISPLAY |
| METER BODY MATERIAL | PPS |
| WETTED COMPONENTS: | |
| ROTOR MATERIAL | PPS |
| SHAFTS | 316 St St or Hastalloy C (Optional Meter Model Designation C) |
| O-RING | NBR (NITRILE) |
| FLOW RATE RANGES (litres per minute/US gallons per minute) | |
| ABOVE 5 CPS | 3 to 80 / 0.8 to 21 |
| BELOW 5 CPS | 8 to 70 / 2 to 18.5 |
| ACCURACY- WITHIN (OF READING) | +/- 0.5% |
| REPEATABILITY | 0.03% |
| MAXIMUM VISCOSITY (OF STANDARD MODEL) | 1000 Centipoise |
| MAXIMUM OPERATING PRESSURE | 1000kPa / 150PSI / 10BAR |
| PULSER TYPE | HALL EFFECT OR REED SWITCH OR COMBINATION HE / RS |
| PULSES PER LITRE/US GALLON | 52 OR 104 / 197 OR 394 |
| MAX. OPERATING TEMPERATURE | 80°C / 176°F |
| RECOMMENDED MESH STRAINER SIZE | 60 MESH |



Standard LC Display



Deluxe LC Display

Port Size To order flowmeter you must replace 'X' with the relevant number. This number will determine the following specifications:

Port Size:

- 1 = 1/2" BSP (F) ports
- 2 = 1/2" NPT (F) ports

Calibrated In:

- Litres
- US Gallons

Electrical Conduit Connection:

- 20mm (F)
- 1/2" NPT (F)

PPS = Polyphenylene Sulfide Resins

G7 - 1" PULSE & LC DISPLAY METERS

Options & Accessories

| G7 - 1" METER | VITON O-RING | TEFLON O-RING | EPDM O-RING | HIGH TEMP ROTORS | HIGH VISCOSITY ROTORS | HALL EFFECT SENSOR | REED SWITCH | SOLVENT KIT | HASTALLOY C SHAFTS | PROTECTIVE BOOT DELUXE LCD | EXTENDED LIFE BATTERY DELUXE LCD | REMOTE MOUNTED LC DISPLAY | HEATING JACKET | 4-20mA MODULE |
|---------------|--------------|---------------|-------------|------------------|-----------------------|--------------------|-------------|-------------|--------------------|----------------------------|----------------------------------|---------------------------|----------------|---------------|
| G7RRP-X | O | O | O | X | X | O | S | X | O | X | X | A | X | A |
| G7RRG-X | O | O | O | X | X | O | S | X | O | X | X | O | X | A |
| G7RRE-X | O | O | O | X | X | O | S | X | O | A | A | O | X | A |

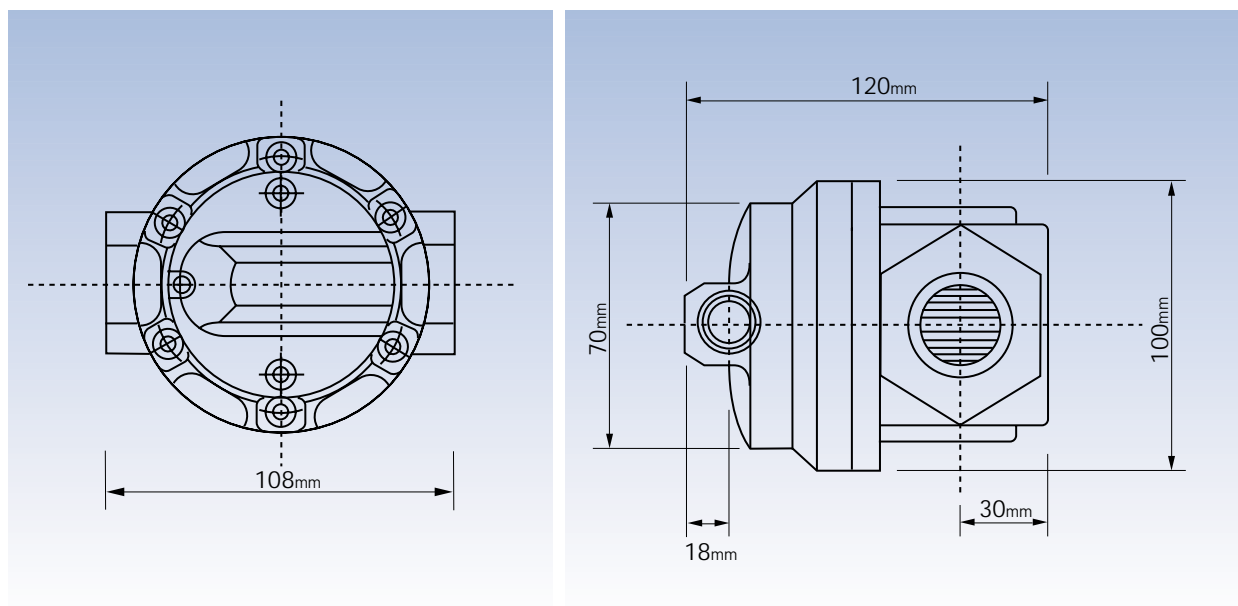
S = Standard

O = Optional

X = Not Available

A = Accessory

Dimensions



Standard Display H 115mm x W 102mm
 Deluxe Display H 137mm x W 137mm

G4 - 1/2" PULSE & LC DISPLAY METERS

The G4 is a new addition and is a low to medium flow range model replacing the current G5 series. It is a compact meter that has the ability to handle a wide range of fluid viscosities with exceptional levels of repeatability and durability.



G4ARP-X

Product Benefits

- Compact size.
- Two independent pulse units which can be linked to allow doubling of the pulse output.
- Flexibility of installation options (e.g. can be mounted horizontally or vertically; no flow conditioning required).
- Low pressure drop allows for economical pump selection or gravity flow applications.
- Meter construction enables fast and easy on-site servicing without removal from application.
- Meter design minimises the number of wearable and replaceable parts and extends product life.
- Meter accuracy is verified by a factory calibration check after which an individual metrology report is issued.
- Both LC Displays meets European CE directive.
- Deluxe Display Pulse Version has IP66/NEMA16 protection.
- Intrinsically safe LC Deluxe Display. Certificate of conformity number PTB Nr. Ex-93.C.4033x
- Pulse version has Flameproof Certification. (TBA)
- Will handle particle sizes to 0.28mm/0.011".

| | |
|---|---|
| MODEL | G4 |
| METER TYPE | PULSE / STANDARD LC DISPLAY / DELUXE LC DISPLAY |
| METER BODY MATERIAL | ALUMINIUM / 316 STAINLESS STEEL |
| WETTED COMPONENTS: ROTOR MATERIAL SHAFTS O-RING | PPS / 316 STAINLESS STEEL 316 STAINLESS STEEL NBR (NITRILE) |
| FLOW RATE RANGES (litres per minute/US gallons per minute) ABOVE 5 CPS BELOW 5 CPS | 1 to 30 / 0.26 to 8 3 to 25 / 0.8 to 6.60 |
| ACCURACY- WITHIN (OF READING) | +/- 0.5% |
| REPEATABILITY | 0.03% |
| MAXIMUM VISCOSITY (OF STANDARD MODEL) | 1000 Centipoise |
| MAXIMUM OPERATING PRESSURE | 5500kPa/ 800 PSI/ 55 BAR |
| PULSER TYPE | HALL EFFECT OR REED SWITCH OR COMBINATION HE / RS |
| PULSES PER LITRE/US GALLON | 112 / 424 |
| MAX. OPERATING TEMPERATURE | 80°C / 176°F, 120°C / 248°F |
| RECOMMENDED MESH STRAINER SIZE | 60 MESH |



Standard LC Display



Deluxe LC Display

Port Size To order flowmeter you must replace 'X' with the relevant number. This number will determine the following specifications:

Port Size:

- 1 = 1/2" BSP (F) ports
- 2 = 1/2" NPT (F) ports

Calibrated In:

- Litres
- US Gallons

Electrical Conduit Connection

- 20mm (F)
- 1/2" NPT

PPS = Polyphenylene Sulfide Resins

G4 - 1/2" PULSE & LC DISPLAY METERS

Options & Accessories

| G4 - 1/2" METER | VITON O-RING | TEFLON O-RING | EPDM O-RING | HIGH TEMP ROTORS | HIGH VISCOSITY ROTORS | HALL EFFECT SENSOR | REED SWITCH | SOLVENT KIT | HASTALLOY C SHAFTS | PROTECTIVE BOOT DELUXE LCD | EXTENDED LIFE BATTERY DELUXE LCD | REMOTE MOUNTED LC DISPLAY | HEATING JACKET | 4-20mA MODULE |
|-----------------|--------------|---------------|-------------|------------------|-----------------------|--------------------|-------------|-------------|--------------------|----------------------------|----------------------------------|---------------------------|----------------|---------------|
| G4ARX-X | O | O | O | O | O | O | S | X | X | A | A | A | X | A |
| G4ASX-X | O | O | O | S | O | O | S | X | X | A | A | A | X | A |
| G4SRX-X | O | O | O | O | O | O | S | X | X | A | A | A | X | A |
| G4SSX-X | O | O | O | S | O | O | S | X | X | A | A | A | X | A |

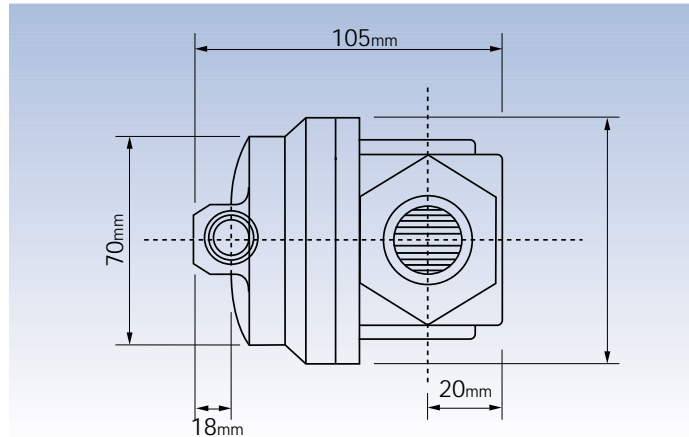
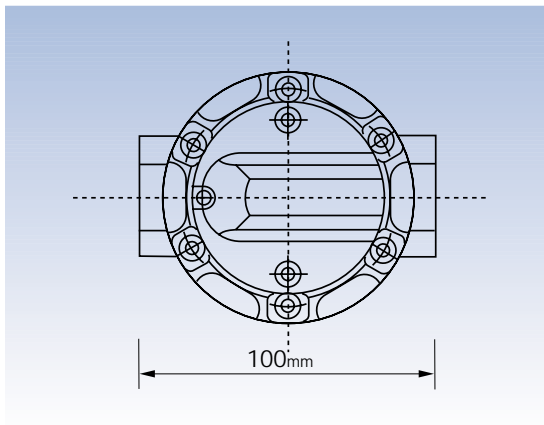
S = Standard

O = Optional

X = Not Available

A = Accessory

Dimensions



Standard Display H 102mm x W 102mm
Deluxe Display H 122mm x W 137mm

G4 - 1/2" WITH MECHANICAL DISPLAY

The G4 is a new addition and is a low to medium flow range model replacing the current G5 series. It is a compact meter that has the ability to handle a wide range of fluid viscosities with exceptional levels of repeatability and durability.



Product Benefits

- Compact size.
- Easy to read and operate mechanical display.
- Flexibility of installation options (e.g. can be mounted horizontally or vertically; no flow conditioning required).
- Low pressure drop allows for economical pump selection or gravity flow applications.
- Meter construction enables fast and easy on-site servicing without removal from application.
- Will handle particle sizes to 0.28mm/0.011".
- Meter accuracy is verified by a factory calibration check after which an individual metrology report is issued.
- Meter design minimises the number of wearable and replaceable parts and extends product life.

| MODEL | G4 |
|---|----------------------------------|
| METER TYPE | METER WITH MECHANICAL DISPLAY |
| METER BODY MATERIAL | ALUMINIUM OR 316 STAINLESS STEEL |
| WETTED COMPONENTS: | |
| ROTOR MATERIAL | PPS OR 316 STAINLESS STEEL |
| SHAFTS | 316 STAINLESS STEEL |
| O-RING | NBR (NITRILE) |
| FLOW RATE RANGES (litres per minute/US gallons per minute) | |
| ABOVE 5 CPS | 1 to 30 / 0.26 to 8 |
| BELOW 5 CPS | 3 to 25 / 0.8 to 6.60 |
| ACCURACY- WITHIN (OF READING) | +/- 1% |
| REPEATABILITY | 0.03% |
| MAXIMUM VISCOSITY (OF STANDARD MODEL) | 1000 Centipoise |
| MAXIMUM OPERATING PRESSURE | 3400kPa/ 34 Bar / 500 PSI |
| MAX. OPERATING TEMPERATURE | 80°C / 176°F, 120°C / 248°F |
| RECOMMENDED MESH STRAINER SIZE | 60 MESH |



Mechanical Display

Port Size To order flowmeter you must replace 'X' with the relevant number. This number will determine the following specifications:

Port Size:

- 1 = 1/2" BSP (F) ports
- 2 = 1/2" NPT (F) ports

Calibrated In:

- Litres
- US Gallons

PPS = Polyphenylene Sulfide Resins

G4 - 1/2" WITH MECHANICAL DISPLAY

Options & Accessories

| G4 - 1/2" METER | VITON O-RING | TEFLON O-RING | EPDM O-RING | HIGH TEMP ROTORS | HIGH VISCOSITY ROTORS | HALL EFFECT SENSOR | REED SWITCH | SOLVENT KIT | HASTALLOY C SHAFTS | PROTECTIVE BOOT | EXTENDED LIFE BATTERY | REMOTE MOUNTED LC DISPLAY | HEATING JACKET | 4-20mA MODULE |
|-----------------|--------------|---------------|-------------|------------------|-----------------------|--------------------|-------------|-------------|--------------------|-----------------|-----------------------|---------------------------|----------------|---------------|
| G4ARM-X | O | O | O | O | O | X | X | O | X | X | X | X | X | X |
| G4ASM-X | O | O | O | S | O | X | X | S | X | X | X | X | X | X |
| G4SRM-X | O | O | O | O | O | X | X | O | X | X | X | X | X | X |
| G4SSM-X | O | O | O | S | O | X | X | S | X | X | X | X | X | X |

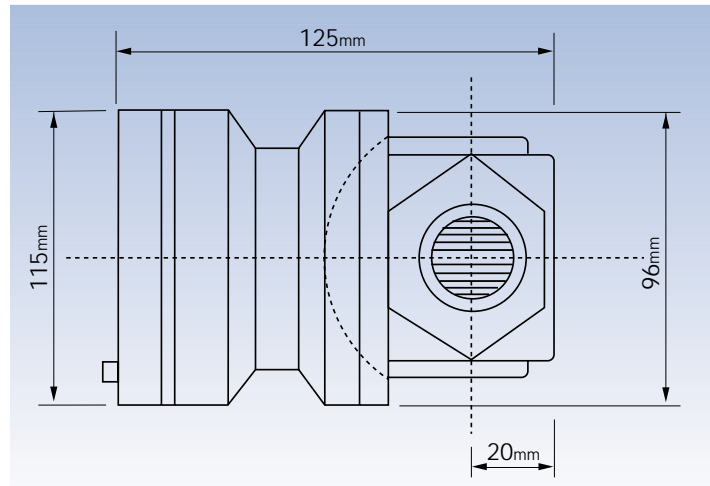
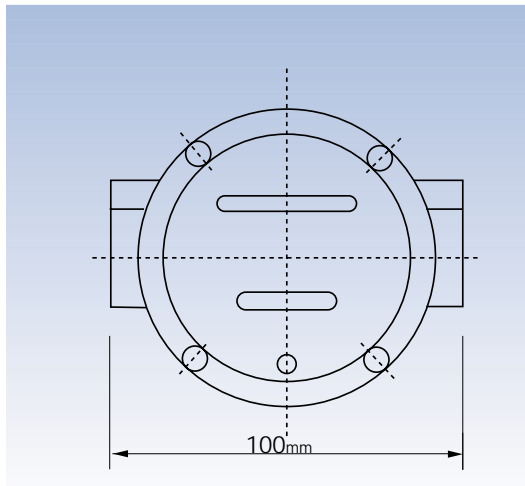
S = Standard

O = Optional

X = Not Available

A = Accessory

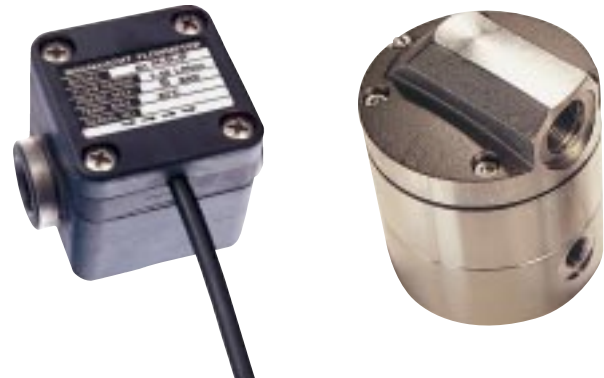
Dimensions



G2 - 1/4" PULSE METERS



The **G2** is one of the small capacity meters in the **G** Series range and is differentiated by its flow rate capabilities. It has the ability to handle a wide range of fluid viscosities with exceptional levels of repeatability and durability.



Product Benefits

- Very compact size.
- Low flow capability with high resolution output.
- Solid state Hall Effect Sensor or Reed Switch options.
- Has IP54/NEMA13 protection.
- Flexibility of installation options (e.g. can be mounted horizontally or vertically; no flow conditioning required).
- Meter accuracy is verified by a factory calibration check after which an individual metrology report is issued.
- Will handle particle sizes to 0.127mm/0.005".
- Low pressure drop allows for economical pump selection or gravity flow applications.
- Meter design minimises the number of wearable and replaceable parts and extends product life.

| | | | HIGH PRESSURE MODEL |
|---|---|---|---|
| MODEL | G2RSP-XY | G2SSP-XY | G2SSPH-XY |
| METER TYPE | PULSE | PULSE | PULSE |
| METER BODY MATERIAL | PPS | 316 STAINLESS STEEL | 316 STAINLESS STEEL |
| WETTED COMPONENTS: ROTOR MATERIALS SHAFTS O-RING | 316 STAINLESS STEEL 316 STAINLESS STEEL VITON | 316 STAINLESS STEEL 316 STAINLESS STEEL VITON | 316 STAINLESS STEEL 316 STAINLESS STEEL VITON |
| FLOW RATE RANGES (litres per hour/ US gallons per hour) ABOVE 5 CPS BELOW 5 CPS | 15 to 500 / 4 to 132 25 to 500 / 6 to 132 | 15 to 500 / 4 to 132 25 to 500 / 6 to 132 | 15 to 500 / 4 to 132 25 to 500 / 6 to 132 |
| ACCURACY- WITHIN (OF READING) | +/- 1% | +/- 1% | +/- 1% |
| REPEATABILITY | 0.03% | 0.03% | 0.03% |
| MAXIMUM VISCOSITY | 1000 Centipoise | 1000 Centipoise | 1000 Centipoise |
| MAXIMUM OPERATING PRESSURE | 500kPa/ 75 PSI/ 5 BAR | 1000kPa/ 150PSI/ 10BAR | 551600kPa/ 8000PSI/ 551BAR |
| PULSER TYPE | HALL EFFECT SENSOR OR REED SWITCH | HALL EFFECT SENSOR OR REED SWITCH | HALL EFFECT SENSOR |
| PULSES PER LITRE/ US GALLON | 400 / 1514.2 | 400 / 1514.2 | 400 / 1514.2 |
| MODEL DIMENSIONS METER BODY PORT FACE TO FACE | 50x50mm / 1.97"x1.97" 65mm / 2.58" | 50x50mm / 1.97"x1.79" 65mm / 2.58" | 86mm dia x 110mm h / 3.4" dia x 4.33" h 83mm / 3.26" |
| WEIGHT | 240g / 8.5oz | 600g / 21.2oz | 3.3kg /116.5oz |
| MAX. OPERATING TEMPERATURE | 80°C / 176°F | 120°C / 248°F | 120°C / 248°F |
| RECOMMENDED MESH STRAINER SIZE | 200 MESH | 200 MESH | 200 MESH |

X-Port Size To order flowmeter you must replace 'X' with the relevant number. This number will determine the following specifications:
Y-Switch Operation (ie: Specify 'H' for Hall Effect or 'R' for Reed Switch)

- | | | |
|------------------------|--------------------------|--|
| 1 = 1/4" BSP (F) ports | Calibrated in litres | 1m/39" pulser fly lead |
| 2 = 1/4" NPT (F) ports | Calibrated in US gallons | 1m/39" pulser fly lead |
| 1 = 1/4" BSP (F) ports | Calibrated in litres | 20mm (F) electric conduit connection |
| 2 = 1/4" NPT (F) ports | Calibrated in US gallons | 1/2" NPT (F) electric conduit connection |

PPS = Polyphenylene Sulfide Resins

G2 - 1/4" PULSE METERS

TYPE G2 - 1/4" PULSE METERS

Weights

| MODEL | G2RSP-XY | G2SSP-XY | G2SSPH-XY |
|--------|--------------|---------------|-----------------|
| WEIGHT | 240g / 8.5oz | 600g / 21.2oz | 3.3kg / 116.5oz |

Options & Accessories

| G2- 1/4" METER | VITON O-RING | TEFLON O-RING | EPDM O-RING | HIGH TEMP ROTORS | HIGH VISCOSITY ROTORS | HALL EFFECT SENSOR | REED SWITCH | SOLVENT KIT | PPS ROTORS WITH HASTALLOY C SHAFTS | PROTECTIVE BOOT | EXTENDED LIFE BATTERY | REMOTE MOUNTED LC DISPLAY | HEATING JACKET | 4-20mA MODULE (REMOTE) |
|----------------|--------------|---------------|-------------|------------------|-----------------------|--------------------|-------------|-------------|------------------------------------|-----------------|-----------------------|---------------------------|----------------|------------------------|
| G2RSP-XY | S | O | O | X | X | O | O | X | O | X | X | A | X | A |
| G2SSP-XY | S | O | O | X | X | O | O | X | X | X | X | A | X | A |
| G2SSPH-XY | S | O | O | X | X | S | X | X | X | X | X | A | X | A |

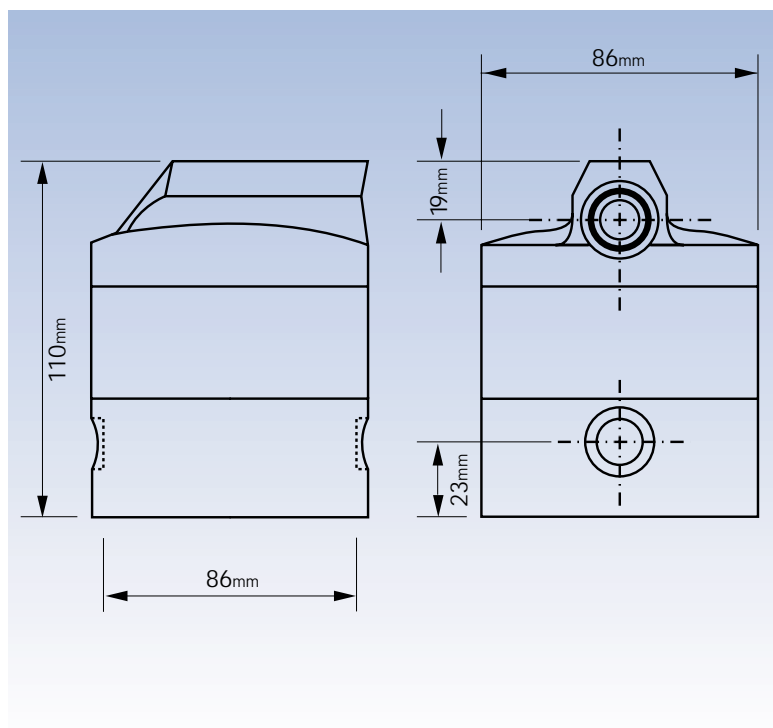
S = Standard

O = Optional

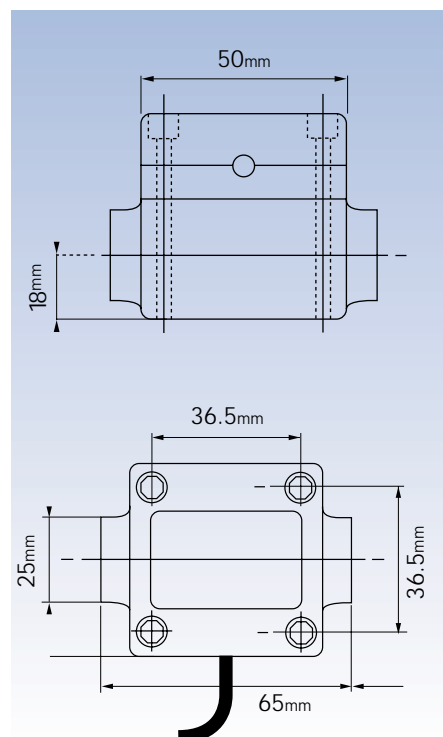
X = Not Available

A = Accessory

Dimensions of high pressure version only model type G2SSPH-X

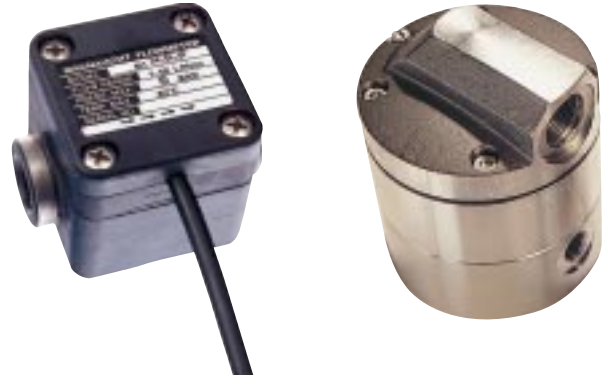


Standard meter



G1 - 1/4" PULSE METERS

The G1 is one of the small capacity meters in the G Series range and is differentiated by its flow rate capabilities. It has the ability to handle a wide range of fluid viscosities with exceptional levels of repeatability and durability.



Product Benefits

- Very compact size.
- Low flow capability with high resolution output.
- Meter accuracy is verified by a factory calibration check after which an individual metrology report is issued.
- Solid state Hall Effect Sensor or Reed Switch options.
- Low pressure drop allows for economical pump selection or gravity flow applications.
- Meter design minimises the number of wearable and replaceable parts and extends product life.
- Will handle particle sizes to 0.127mm/0.005".
- Has IP54/NEMA13 protection.
- Flexibility of installation options (e.g. can be mounted horizontally or vertically; no flow conditioning required).

| | HIGH PRESSURE MODEL | | |
|---|---|---|---|
| MODEL | G1RSP-XY | G1SSP-XY | G1SSPH-X |
| METER TYPE | PULSE | PULSE | PULSE |
| METER BODY MATERIAL | PPS | 316 STAINLESS STEEL | 316 STAINLESS STEEL |
| WETTED COMPONENTS: ROTOR MATERIAL SHAFTS O-RING | 316 STAINLESS STEEL 316 STAINLESS STEEL VITON | 316 STAINLESS STEEL 316 STAINLESS STEEL VITON | 316 STAINLESS STEEL 316 STAINLESS STEEL VITON |
| FLOW RATE RANGES (litres per hour/US gallons per hour) | | | |
| ABOVE 5 CPS | 2 to 100 / 0.53 to 26.4 | 1 to 100 / 0.53 to 26.4 | 1 to 100 / 0.53 to 26.4 |
| BELOW 5 CPS | 5 to 100 / 1.32 to 26.4 | 2 to 100 / 1.32 to 26.4 | 2 to 100 / 1.32 to 26.4 |
| ACCURACY- WITHIN (OF READING) | +/- 1% | +/- 1% | +/- 1% |
| REPEATABILITY | 0.03% | 0.03% | 0.03% |
| MAXIMUM VISCOSITY | 1000 Centipoise | 1000 Centipoise | 1000 Centipoise |
| MAXIMUM OPERATING PRESSURE | 500kPa/ 75 PSI/ 5 BAR | 1000kPa/ 150PSI/ 10BAR | 55160kPa/ 8000PSI/ 551BAR |
| PULSER TYPE | HALL EFFECT SENSOR OR REED SWITCH | HALL EFFECT SENSOR OR REED SWITCH | HALL EFFECT SENSOR |
| PULSES PER LITRE/US GALLON | 1000 / 3785.4 | 1000 / 3785.4 | 1000 / 3785.4 |
| MODEL DIMENSIONS METER BODY PORT FACE TO FACE | 50x50mm / 1.97"x1.97" 65mm / 2.58" | 50x50mm / 1.97"x1.97" 65mm / 2.58" | 86mm dia x 110mm h / 3.4" dia x 4.33" h 83mm / 3.26" |
| WEIGHT | 240g / 8.5oz | 600g / 21.2oz | 3.3kg / 116.5oz |
| MAX. OPERATING TEMPERATURE | 80°C / 176°F | 120°C / 248°F | 120°C / 248°F |
| RECOMMENDED MESH STRAINER SIZE | 200 MESH | 200 MESH | 200 MESH |

X-Port Size To order flowmeter you must replace 'X' with the relevant number. This number will determine the following specifications:
Y-Switch Operation (ie: Specify 'H' for Hall Effect or 'R' for Reed Switch)

- | | | |
|------------------------|--------------------------|--|
| 1 = 1/4" BSP (F) ports | Calibrated in litres | 1m/39" pulser fly lead |
| 2 = 1/4" NPT (F) ports | Calibrated in US gallons | 1m/39" pulser fly lead |
| 1 = 1/4" BSP (F) ports | Calibrated in litres | 20mm (F) electric conduit connection |
| 2 = 1/4" NPT (F) ports | Calibrated in US gallons | 1/2" NPT (F) electric conduit connection |

PPS = Polyphenylene Sulfide Resins

G1 - 1/4" PULSE METERS

Weights

| MODEL | G1RSP-XY | G1SSP-XY | G1SSPH-XY |
|--------|--------------|---------------|-----------------|
| WEIGHT | 240g / 8.5oz | 600g / 21.2oz | 3.3kg / 116.5oz |

Options & Accessories

| G1 - 1/4" METER | VITON O-RING | TEFLON O-RING | EPDM O-RING | HIGH TEMP ROTORS | HIGH VISCOSITY ROTORS | HALL EFFECT SENSOR | REED SWITCH | SOLVENT KIT | PPS ROTORS WITH HASTALLOY C SHAFTS | PROTECTIVE BOOT | EXTENDED LIFE BATTERY | REMOTE MOUNTED LC DISPLAY | HEATING JACKET | 4-20mA MODULE (REMOTE) |
|-----------------|--------------|---------------|-------------|------------------|-----------------------|--------------------|-------------|-------------|------------------------------------|-----------------|-----------------------|---------------------------|----------------|------------------------|
| G1RSP-XY | S | O | O | X | X | O | O | X | O | X | X | A | X | A |
| G1SSP-XY | S | O | O | X | X | O | O | X | X | X | X | A | X | A |
| G1SSPH-XY | S | O | O | X | X | S | X | X | X | X | X | A | X | A |

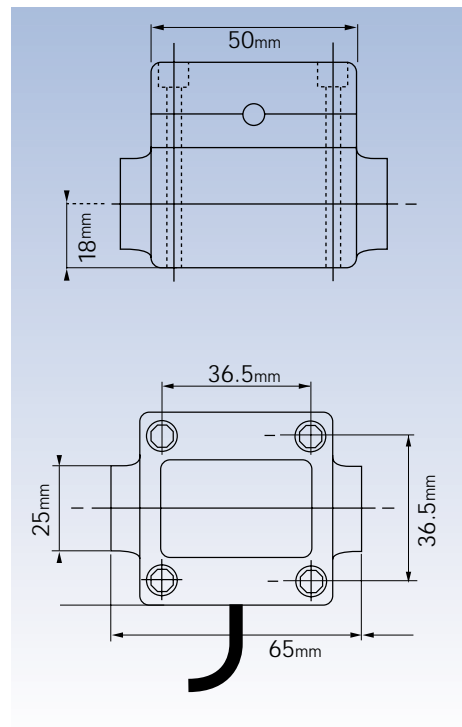
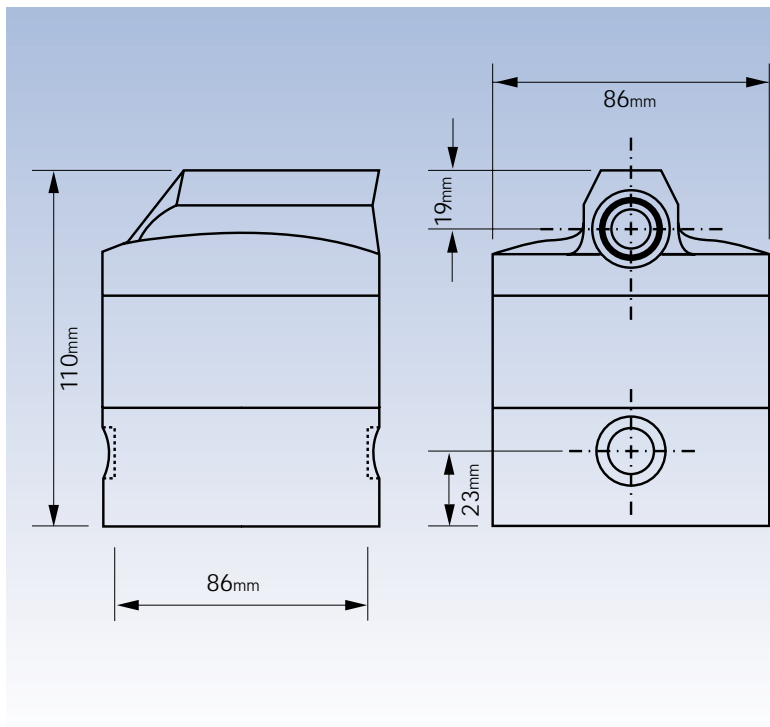
S = Standard

O = Optional

X = Not Available

A = Accessory

Dimensions of high pressure version only Standard meter model type G1SSPH-X



G100 4" PD Flowmeter



Suitable for fuels, solvents and lubricants to a viscosity of 1000cp, the **G100** is a four inch , high flow, oval gear flowmeter and, as the largest capacity meter in the G-Series range, is capable of measuring fluid transfer up to 1200LPM. Remaining consistent with GEMINI'S entire range of PD flowmeters, the G100 is accurate to +/- 0.5%, providing exceptional levels of repeatability and durability. The G100 is available with analogue mechanical display, pulse only or with either of two LCD units (refer below).

PRODUCT BENEFITS:

- Compact size
- Easy to read and operate mechanical display
- Flexibility of installation options (eg: can be mounted horizontally or vertically - no flow conditioning required)
- Low pressure drop allows for economical pump selection or gravity flow applications
- Meter construction enables fast and easy on-site servicing without removal from application
- Meter accuracy is verified by a factory calibration check after which an individual metrology report is issued
- Meter design minimises the number of wearable and replaceable parts and extends product life
- Will handle particle sizes to 0.5mm/0.0510"
- Available with 4" BSP(F), 4" NPT(F), ANSI 150lb, DIN16 & JIS 10 flange rules (modular construction)
- An option of 100 pulse per unit of measurable output pulse available
- LCD optional displays meet European CE directive
- Standard/deluxe displays and pulse version have IP66/NEMA6 protection
- Intrinsically safe deluxe LC display. Certificate of conformity number PTB NR. Ex-93. C4033x, KemaEx-00.E.1127 (ATEX Certified)
- Pulse version flameproof certified AUS Ex2377x



STANDARD DISPLAY

- Liquid Crystal Display
- 7 x 17mm Digits
- 11 x 8mm Digits
- Total / Reset Total / Rate
- 7 Year Battery Life
- Meter or Remote Mount
- IP65 Protection



DELUXE DISPLAY

- Liquid Crystal Display
- 7 x 13mm Digits
- Total / Reset Total / Rate
- Batching Facility
- 1 Year Battery Life
- Meter or Remote Mount
- IP54 Protection
- Silicon Protection Boot Option



MECHANICAL REGISTER ANALOGUE

- Revolving Pointer 10L or 100L
- 150mm Diameter Dial
- Total 6 Digits
- Reset Total 4 Digits
- Pulser Option



METER SPECIFICATIONS:

| | |
|--|----------------------------|
| MODEL: | G100 |
| Meter body material: | AA601 Aluminium |
| Wetted components: | |
| Rotor material: | Aluminium |
| Shafts: | 316 stainless steel |
| O-ring: | NBR (nitrile) |
| Flow rate ranges: | |
| Above 5cps: | 66-1200 Ltrs/Min |
| Below 5cps: | tba: |
| Accuracy: within (of reading) | +/-0.5% |
| Repeatability: | 0.03% |
| Pulser type | Reed Switch or Hall effect |
| (Pulse and LCD display only): | Dual Reed Switch |
| Pulse per litre/US gallon | As per cal cert |
| (Pulse and LCD display only): | 2.58 / 9.766 |
| Maximum viscosity (of standard model): | 1000 centipoise |
| Maximum operating pressure: | 150 PSI |
| Maximum operating temperature: | 60oC |
| Recommended mesh strainer size: | 40 mesh |



OPTIONS & ACCESSORIES

| G100 - 4" METER | VITON O-RING | TEFLON O-RING | EPDM O-RING | HIGH TEMP ROTORS | HIGH VISCOSITY ROTORS | HALL EFFECT SENSOR | REED SWITCH | SOLVENT KIT | HASTALLOY C SHAFTS | PROTECTIVE BOOT DELUXE LCD | EXTENDED LIFE BATTERY DELUXE LCD | REMOTE MOUNTED LC DISPLAY | HEATING JACKET | 4-20mA MODULE |
|-----------------|--------------|---------------|-------------|------------------|-----------------------|--------------------|-------------|-------------|--------------------|----------------------------|----------------------------------|---------------------------|----------------|---------------|
| G100AAX-X | 0 | 0 | 0 | X | X | 0 | S | X | X | A | A | A | X | A |
| G100AAMA-X | 0 | 0 | 0 | X | X | X | X | 0 | X | S | A | X | X | X |

S = Standard

0 = Optional

X = Not Available

A = Accessory

Available From: