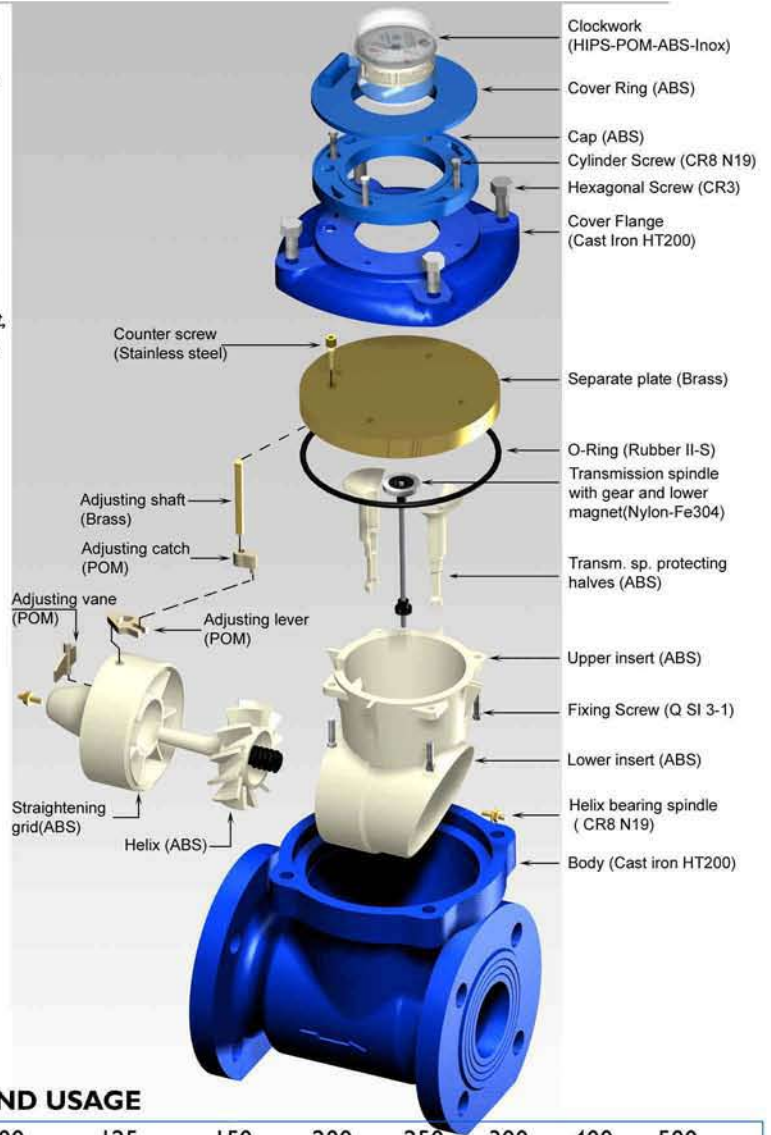
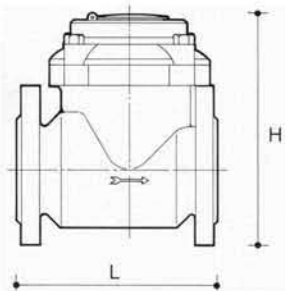
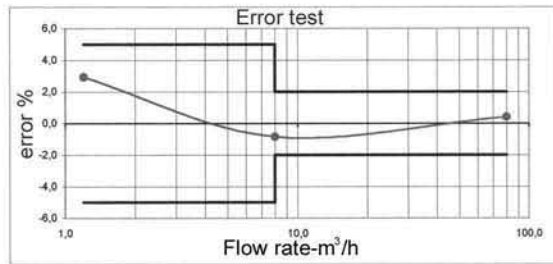


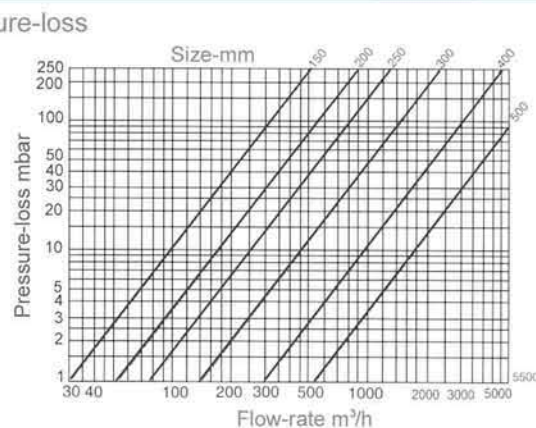
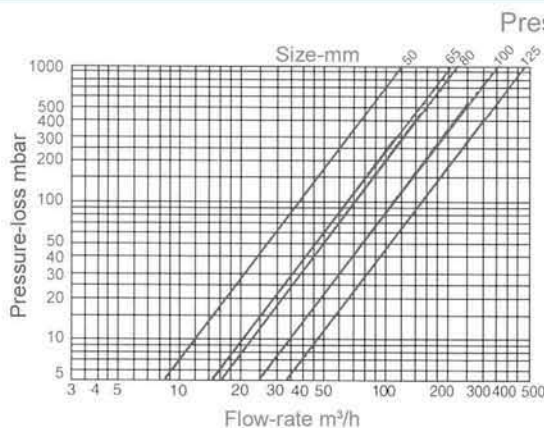
Helix Woltmann type water meter-interchangeable mechanism-dry dial

A full bore, helix Woltmann type meter suitable for cold water. The impeller which is of modern design, rotates on stainless steel spindles mounted in the measuring chamber. The impeller is made of self-cleaning synthetic resin. The helix aligns with the pipe axis. The complete metering unit is easily removable from the meter body. The meter is designed to ensure high flow-rate with the minimum headloss. Model Omega-We-Sdc is a super-dry dial type meter. The gears and the totalizer operate under vacuum in a dry compartment, only the helix is submerged in the water. The transmission is achieved through a corrosion-proof permanent magnetic drive which is protected by the cast iron meter body from external magnetic field. A version for warm water up to 90°C is available. A version suitable for telemetering complete with a pulse output is also available.



SIZE AND USAGE

Gauge	mm	50	65	80	100	125	150	200	250	300	400	500
	inches	2"	2 1/2"	3"	4"	5"	6"	8"	10"	12"	16"	20"
Max qty	m³/h	30	50	80	120	200	300	500	800	1200	2000	3000
n qty	m³/h	15	25	40	60	100	150	250	400	600	1000	1500
t qty	m³/h	3	5	8	12	20	30	50	80	120	200	300
Min qty	m³/h	0,45	0,75	1,2	1,8	3	4,5	7,5	12	18	30	45
SP	bar	16	16	16	16	16	16	16	16	16	16	16
Pressure drop (at max qty)	bar	<1	<1	<1	<1	<1	<1	<1	<1	<1	<1	<1
Minimum reading	lt	1	1	1	1	1	10	10	10	10	10	10
Maximum reading	m³	10 ⁶	10 ⁶	10 ⁶	10 ⁶	10 ⁶	10 ⁷	10 ⁷	10 ⁷	10 ⁷	10 ⁷	10 ⁷
Weight	kg	12,4	16,4	17	18	22	38	50,8	91,5	114	187	256
L	mm	200	200	225	250	250	300	350	450	500	500	500
H	mm	235	235	255	265	265	325	352	470	495	640	750



Metron f.m.c Ltd

Tel: 0116 2413172

Fax: 0116 2413367