

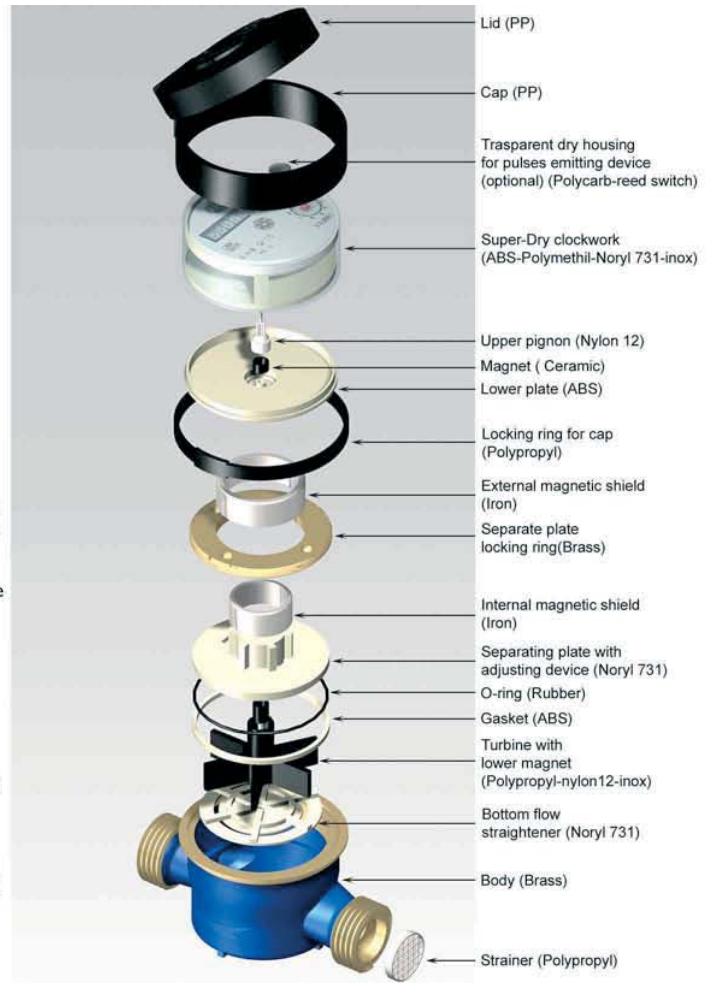
## Single jet cold water meter, 360° rotary dry dial, antifrost system

Cold water turbine meter, "SUPERDRY" 360° rotary super-dry clockwork, with no gearing when dipped in water. Direct reading on eight counters. Single tangential jet. The motion of dipped component is transmitted to the part contained in the specific vacuum capsule by means of a special magnetic joint, protected from external fields which could hamper its efficiency.

The special volume containment within the measuring chamber and the special junction ring of the capsule ensure the dilatation absorption and therefore the optimal frost resistance of the water meter.

Certified according to the ECC Directive 75/33. Standard pressure 16SP. Possible assembly on horizontal axe, with 0,05 lt. indication field at 99999 cubic metre. Supplied with brass coupling.

- Easy reading on 8 counters (5 for cubic meters and 3 red counters for decimals) included in the specific vacuum capsule together with gearings.
- Complete reliability thanks to the magnetic transmission and to the anti-fraud system, supplied upon request.
- Irrelevant pressure drop.
- Certified frost resistance.
- Long operational life thanks to the low r.p.m. turbine and to top quality choice of construction materials.
- The water meter is ECC certified: B class in the horizontal position and A class in the vertical position.
- Impulse transmitter for remote meter reading feature.
- The ultrasound sealed vacuum capsule ensures total lack of internal humidity and resulting dial misting, thus making the use of wipers redundant.
- Warm water feature up to 90°C.



### SIZE AND USAGE

<b>Gauge</b>	mm	13	20	25	30	40
	inches	1/2"	3/4"	1"	1.1/4"	1.1/2"
<b>Max qty</b>	m <sup>3</sup> /h	3	5	7	10	20
<b>n qty</b>	m <sup>3</sup> /h	1,5/1,25	2,5	3,5	5	10
<b>t qty</b>	l/h	120	200	280	400	800
<b>Min qty</b>	l/h	30/25	50	70	100	200
<b>SP</b>	bar	16	16	16	16	16
<b>Pressure drop (at max qty)</b>	bar	<1	<1	<1	<1	<1
<b>Sensitivity</b>	l/h	<10	<15	<20	<20	<25
<b>Minimum reading</b>	lt	0,05	0,05	0,05	0,5	0,5
<b>Maximum reading</b>	m <sup>3</sup>	99.999	99.999	99.999	999.999	999.999
<b>Weight</b>	kg	0,75	1	1,2	1,3	2,4
<b>Length</b>	mm	110	130	160	160	200
<b>Width</b>	mm	72	72	72	100	110
<b>Height</b>	mm	71	71	90	103	120

